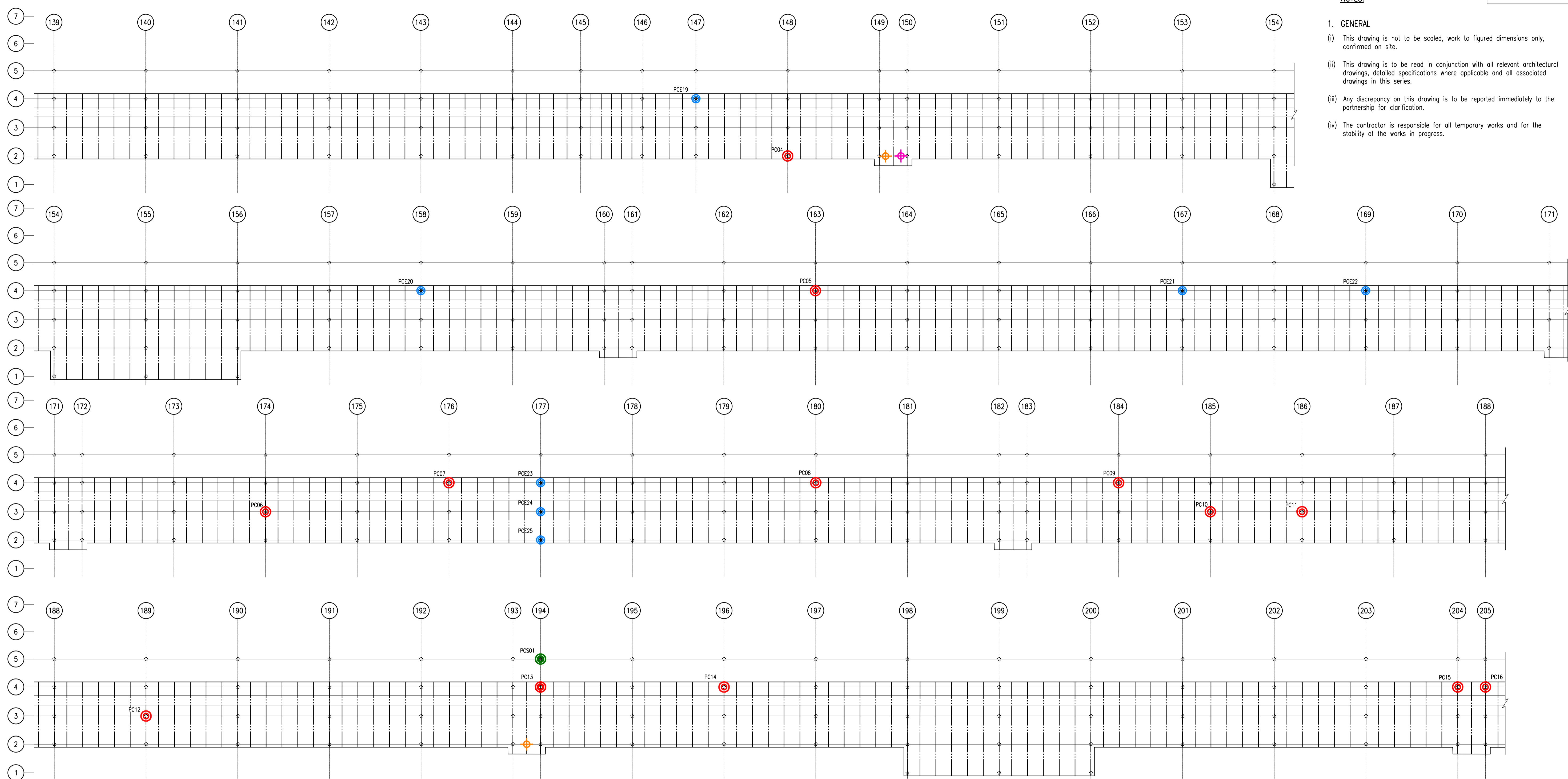


NOTES.

1. GENERAL

- (i) This drawing is not to be scaled, work to figured dimensions only, confirmed on site.
- (ii) This drawing is to be read in conjunction with all relevant architectural drawings, detailed specifications where applicable and all associated drawings in this series.
- (iii) Any discrepancy on this drawing is to be reported immediately to the partnership for clarification.
- (iv) The contractor is responsible for all temporary works and for the stability of the works in progress.



KEY:-

- PC04 (red circle with 'P') INDICATES FAILED PILE CAP (ORIGINAL WORKS 2015/16)
- PCE19 (blue circle with 'P') EMERGENCY PILE CAP REPAIRS (2016)
- PCE20 (green circle with 'P') EMERGENCY PILE CAP REPAIRS (NON STANDARD REPAIR)
- PC07 (red circle with 'P') EMERGENCY PILE CAP REPAIR VO 1 (2016)
- PC08 (red circle with 'P')
- PC09 (red circle with 'P')
- PC10 (red circle with 'P')
- PC11 (red circle with 'P')
- PC12 (red circle with 'P')
- PC13 (red circle with 'P')
- PC14 (red circle with 'P')
- PC15 (red circle with 'P')
- PC16 (red circle with 'P')
- PCS01 (green circle with 'P') EMERGENCY PILE CAP REPAIR VO 1 (2016)
- PC06 (red circle with 'P')
- PC05 (red circle with 'P')
- PCE21 (blue circle with 'P')
- PCE22 (blue circle with 'P')
- PC03 (orange diamond) INDICATIVE MAINS WATER FED PUMP
- PC02 (cyan diamond) INDICATIVE SALT WATER FED OUTLET
- PC01 (pink diamond) INDICATIVE 2 WAY TUG INLET

FOR FURTHER DETAILS REFER TO 'ESSEX COUNTY FIRE AND RESCUE SERVICE DRAWING WS/14152

HOP
HEMSLEY ORRELL PARTNERSHIP
CONSULTING CIVIL & STRUCTURAL ENGINEERS

ISSUED FOR INFORMATION

ISSUED FOR INFORMATION		28.07.2016		L.R.S		-	
Revision		Date		By		Rev. No.	
Client: SOUTHEND-ON-SEA BOROUGH COUNCIL							
Project: SOUTHEND PIER EMERGENCY REPAIRS							
Title: LOCATION PLAN OF EMERGENCY WORKS SHEET 3of4							
<p>HOP HEMSLEY ORRELL PARTNERSHIP CONSULTING CIVIL & STRUCTURAL ENGINEERS HOP House, 41 Church Road, Hove BN3 2BE Tel : +44 (0)1273 223900 E-Mail : engineers@hop.uk.com www.hop.uk.com</p>							
Scales	Date	Drawn	Engineer	Checked	Approved	HOP Contact	
1:200 U.N.O	07/16	J.K.M	N.P.C	N.P.C	-	N.CHASTON	
Project No.	Task No.	Dwg. No.	Rev. No.				
12211	23	LBC03	-				